

GEK-90842

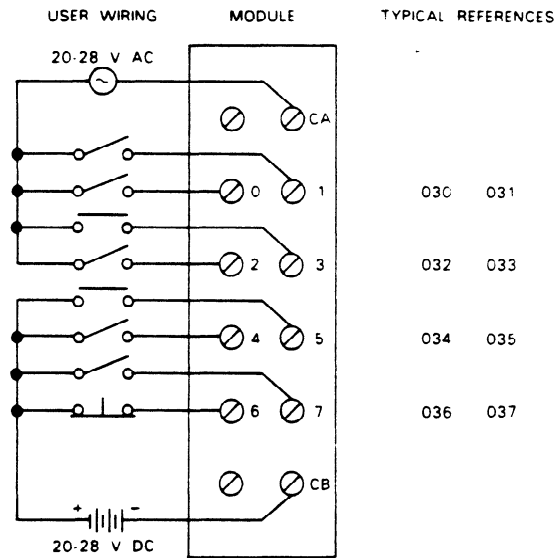
**24 V ac/dc Source Input  
IC610MDL111**

This module provides 8 input circuits, each designed to receive a single discrete (ON/OFF) signal from user supplied devices. Typical input devices include pushbuttons, limit switches, selector switches and relay contacts. These input circuits can interface to either 24 V ac signals or 24 V dc source-type signals, thereby allowing the module to interface to input devices that provide their own voltage. Following are specifications for each of the 8 circuits.

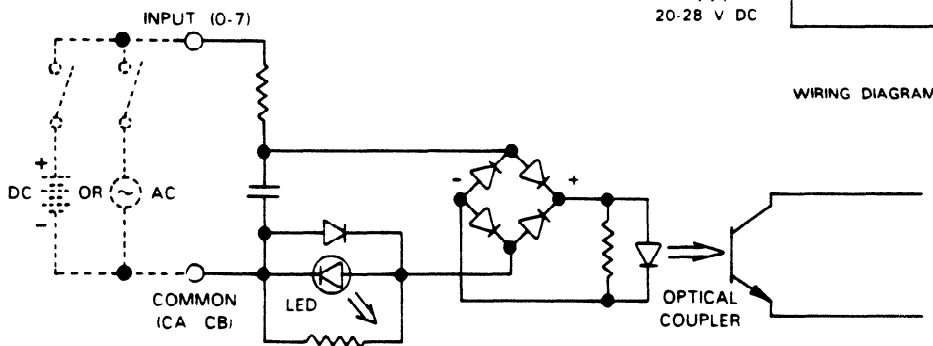
	AC INPUT	DC INPUT
<b>Input Voltage</b>	20 to 28 V ac, 50-60 Hz	20-28 V dc (Source)
<b>Input Current</b>	19 mA (maximum) 13 mA Typical	19 mA (maximum) 13 mA Typical
<b>ON Level</b>	20 to 28 V ac	20 to 28 V dc
<b>OFF Level</b>	0 to 6 V ac	0 to 6 V dc
<b>OFF to ON Response</b>	5 to 50 ms	6 to 30 ms
<b>ON to OFF Response</b>	5 to 60 ms	5 to 60 ms
<b>Circuit Indicator</b>	Field Side	Field Side
<b>Internal Power Consumption</b>		9 V dc, 10 mA (supplied by rack power supply)
<b>Units of Load</b>		1 @ 9 V dc
<b>Weight</b>		5 oz (140 g)

a42681

User devices are connected to screw terminals on the faceplate of this module. Each screw terminal will accept up to one No. 12 AWG wire or two No. 14 AWG wires. The ON/OFF state of each circuit is indicated by an LED located in the field side of each circuit. The 8 circuits are divided into 2 groups of 4, each with its own common. The two commons, CA and CB are isolated from each other internally. Each input can accept either an AC input or a DC input.



a42682



**Figure 6-13. Wiring for 24 V ac/dc Inputs**