

GEK-90842

115 V ac Isolated Input IC610MDL126

This module provides 4 circuits, each designed to receive a single discrete (ON/OFF) signal from user supplied devices. Typical input devices include limit switches, pushbuttons, selector switches, and relay contacts. Each of these circuits is isolated from the other circuits on this module relative to AC power source. The term isolation is not relative to optical-coupler noise and fault isolation which all I/O modules have. Each input is provided with 2 field terminals allowing separate AC power sources (that is, different phases) for each of the four inputs. The sources of AC power must be supplied by the user. Figure 6-7 provides wiring information for this modules.

Although this module consumes 8 discrete references assigned to the I/O slot into which it is inserted, only 4 are actually used. The other 4 can be used internally as coils, but they cannot be provided to hardware I/O modules. Following are specifications for each of the 4 circuits:

Input Points	4
Operating Voltage	97-132 V ac
AC Frequency	47-63 Hz
Input Current	15 ma @ 60 Hz
Input Impedance	10K ohms @ 60 Hz 12K ohms @ 50 Hz
ON Level	Above 80 V ac
OFF Level	Below 20 V ac
OFF to ON Response	10-30 ms
ON to OFF Response	10-60 ms
Circuit Indicator	Field Side
Internal Power Consumption	10 mA @ 9 V dc
Units of Load	1 @ 9 V dc
Weight	4.2 oz (120 g)

pc-s1-83-0032

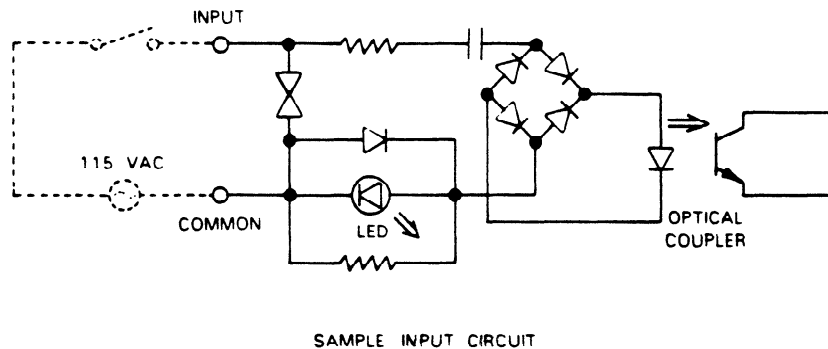
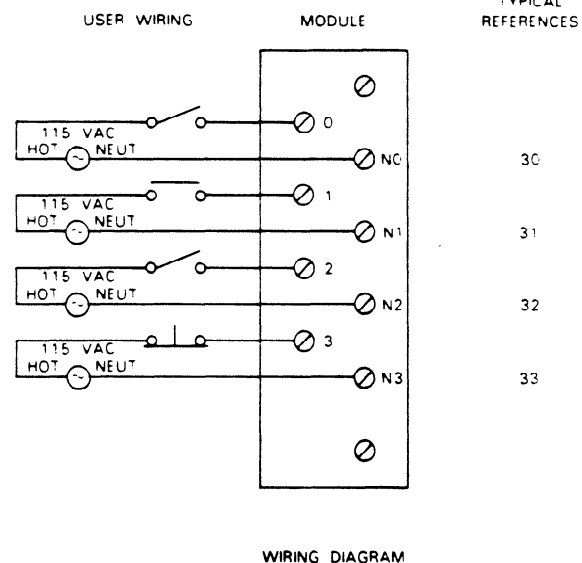


Figure 6-7. Wiring for 115 V ac Isolated Inputs