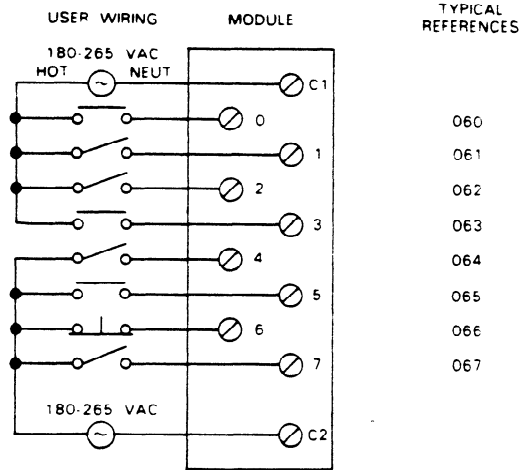


**230 V ac Input
IC610MDL127**

This module provides 8 circuits, each designed to receive a single discrete (ON/OFF) signal from user supplied devices. Typical input devices include limit switches, pushbuttons, selector switches, and relay contacts. The 8 circuits are divided into two groups of 4 circuits each. Each of the 2 groups can be supplied from a separate power source. Power to operate the field devices must also be supplied by the user. Following are specifications for each of these 8 circuits.

Input Points	8
Operating Voltage	180-265 V ac
AC Frequency	47-63 Hz
Input Current	18 mA (265V, 60 Hz), Max.
	11 mA, Typical
Input Impedance	18 K ohms @ 60 Hz
ON Voltage	Above 180 V ac
OFF Voltage	Below 40 V ac
OFF Current	< 2 mA
OFF to ON Response	5-50 ms
ON to OFF Response	5-60 ms
Circuit Indicators	Field Side
Internal Power Consumption	10 mA, 9 V dc
Units of Load	1 Unit @ 9 V dc
Weight	5 oz (140 g)

pc-s1-84-0024

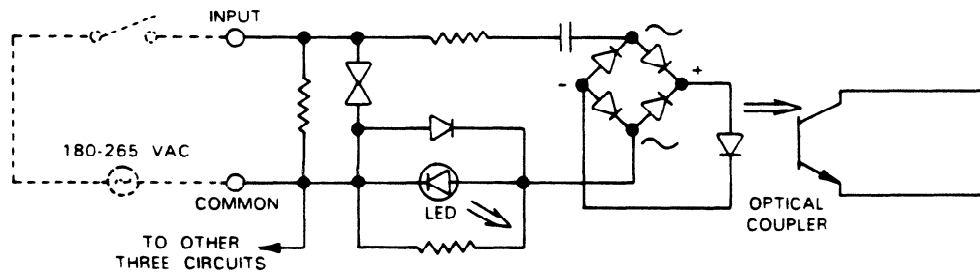


TYPICAL REFERENCES

- 060
- 061
- 062
- 063
- 064
- 065
- 066
- 067

WIRING DIAGRAM

Field connections are made to screw terminals on a terminal block mounted on the faceplate. Each terminal will accept up to one No. 12 AWG wire or two No. 14 wires. The C1 and C2 common terminals are isolated from each other.



SAMPLE INPUT CIRCUIT

Figure 6-6. Wiring for 230 V ac Inputs