

**24 V dc 2 Amp Sink Output
IC610MDL153**

This module provides 4 fused 24 V dc sink output circuits each capable of controlling user supplied discrete (ON/OFF) loads. Each circuit is rated at 2 amps continuous current. Typical loads include motor starters, relay coils, solenoid valves, and indicator lights. The circuits on this module are referred to as sink outputs since current flows from the load into the field terminal for each circuit when the output is energized. Field connections are made to screw terminals on a terminal block mounted on the faceplate. Each terminal will accept up to one No. 12 AWG wire or two No. 14 AWG wires. The ON/OFF state of each circuit is indicated by a corresponding LED. This module, although having only 4 output circuits, will consume 8 consecutive discrete references. The 4 references not available as "real world" outputs can be used as internal coils. Following are specifications for each of the four output circuits.

Output Points	4
Operating Voltage	5 to 24 V dc
Peak Voltage	45 V dc
ON Voltage Drop	.15 V dc @ 1 amp .6 V dc @ 4 amp
Maximum Current*	2 amps
Maximum Leakage Current	< .4 mA @ 40 V dc
OFF to ON Response	.1 ms
ON to OFF Response	.1 ms
Circuit Indicator	Logic Side
Fuses, Internal	5 amp (1 for each circuit) Replaceable
Internal Power Consumption	5 mA @ 24 V dc 12 mA @ 9 V dc
Units of Load	1 unit @ 24 V dc 2 units @ 9 V dc
Weight	4.2 oz (120 g)

a40551

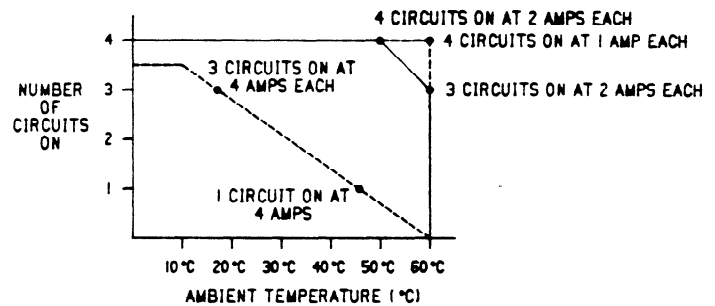


Figure 6-26. I/O Points vs Temperature Chart

*Maximum load current is dependent on ambient temperature as shown in figure 6.26.

pc-s1-84-0022

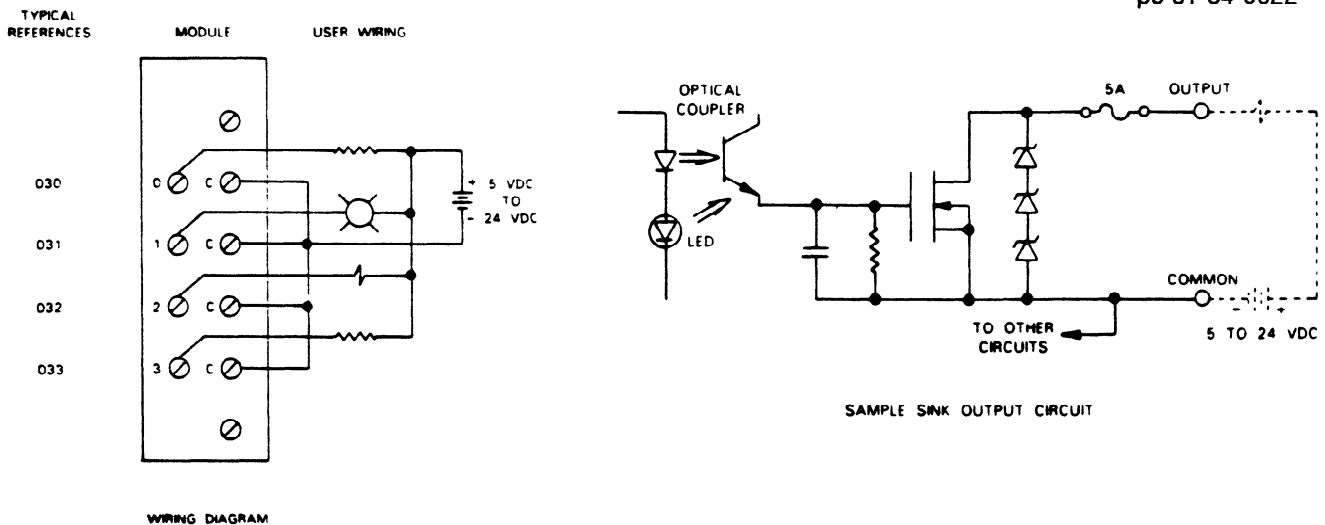


Figure 6-27. Wiring for 24 V dc 2 Amp Sink Outputs